

# MONTHLY MEMBERSHIP PROGRESS REPORT

District 27 A1

Results as of: 5/31/2026

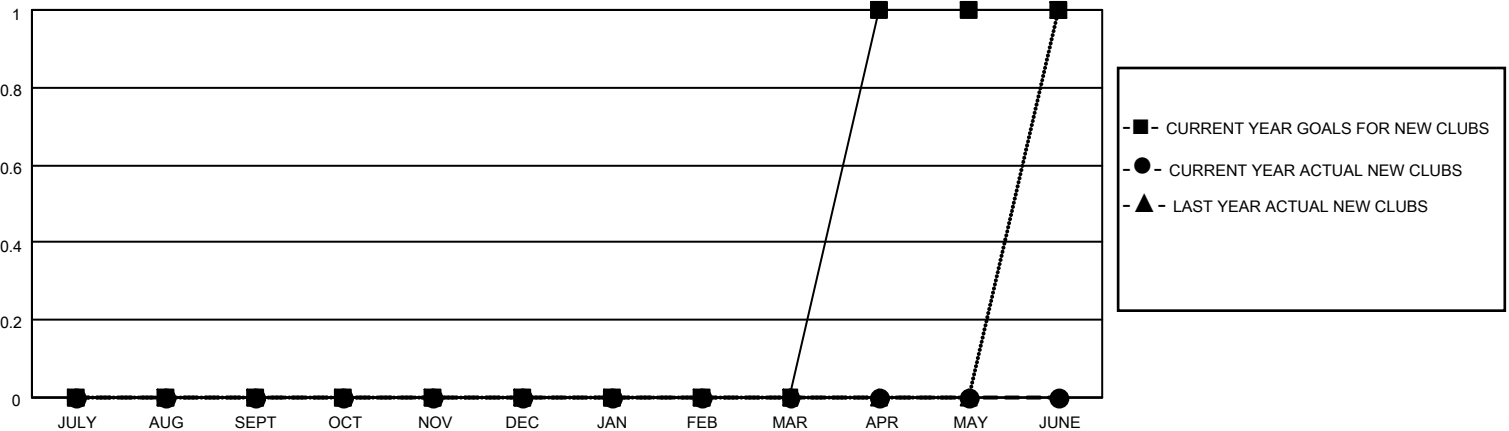
GMT:

LOCATION WISCONSIN

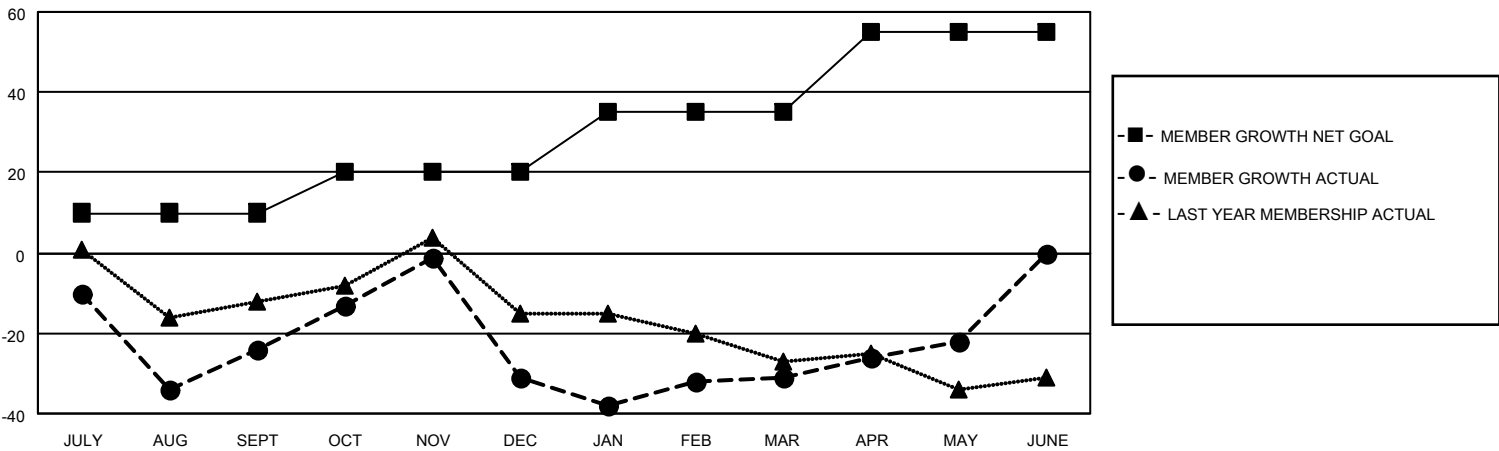
GMT CA

Clubs				Members			
RESULTS FOR 2025-2026				RESULTS FOR 2025-2026			
QUARTER	NEW CLUB GOAL	NEW CLUBS	DROPPED CLUBS	QUARTER	MEMBER GROWTH NET GOAL	MEMBER GROWTH ACTUAL	DROPPED MEMBERS ACTUAL (including transfers)
JULY/AUG/SEPT	0	0	0	JULY/AUG/SEPT	10	35	56
OCT/NOV/DEC	0	0	1	OCT/NOV/DEC	10	73	76
JAN/FEB/MAR	0	0	0	JAN/FEB/MAR	15	43	34
APR/MAY/JUNE	1	0	0	APR/MAY/JUNE	20	29	19

GOALS AND ACTUAL NEW CLUBS CUMULATIVE



GOALS AND ACTUAL MEMBERS CUMULATIVE



DROPPED CLUBS: 1	37 CLUBS OF 52 ADDED 1 OR MORE NEW MEMBERS	<b>GENDER DISTRIBUTION</b> MALE 1,322 (68.85%) FEMALE 598 (31.15%)
<b>DROPPED MEMBERS</b> DECEASED 30 CLUB CANCELLED 11 OTHER 144 TOTAL 185	<a href="#">CLICK HERE FOR CUMULATIVE MEMBERSHIP DATA</a>	TOTAL FAMILY UNIT MEMBERS 338 FAMILY MEMBERS PAYING HALF DUES 172